

TIBET HERITAGE FUND

2008 ANNUAL REPORT

建築文化遺產基金會 2008 年度報告

ཨར་ལས་ཤུལ་བཞག་ཐེབས་ཅུ་ལྷན་ཚགས་ཀྱི་༢༠༠༨ལོའི་སྒྲན་བྲུ



Table of Contents

དཀར་ཆུ་

Introduction	3
Map of project sites	4
1. China Programme	5
1.1 Qinghai Programme	5
1.1.1 Serkhang Monastery Project	5
1.1.2 Trika Community School and Stupa Project	8
1.1.3 Jyekundo Old Town Rehabilitation Project	11
2. Lhasa Rural Support Program	12
3. India Programme	16
3.1 Leh Old Town Conservation Project	16
3.2 Central Asian Museum Project	18
4. Wall-painting Conservation Programme	18
4.1 Qinghai Wall-painting Conservation	18
4.2 Ladakh Wall-painting Conservation	19
5. Research and Publications	20
7. Who are THF	22
8. Financial Report	23



Introduction



Tibet Heritage Fund in 2008

In 2008, the major new project was the Central Asian Museum in Leh. The Ministry of Tourism of Jammu & Kashmir state asked THF to design the first museum for Leh, and is now funding us to build it. The museum is built in traditional Tibetan style, with high-quality stone masonry and wooden pillars and beams. It will house a permanent exhibition about Ladakh's long tradition of being a crossroads of Central Asian caravan trade.

Work in the Tibetan areas of Qinghai province also continued at full steam with the restoration of the 14th century Serkhang monastery and rehabilitation of Jiekundo old town. We also completed a project in the vicinity of Lhasa, providing a small health-care facility for remote villages.

In Mongolia, after having completed the Sangiin Dalai monastery project in 2007, we were asked to explore and evaluate a number of historic sites for future projects.

About Tibet Heritage Fund

TIBET HERITAGE FUND (THF) is an international non-profit organization engaged in the field of international cooperation. We work for sustainable development of communities, often but not exclusively within the Tibetan cultural realm.

Projects such as rehabilitation of traditional settlements and restoration of historic monuments are designed to primarily benefit the local residents. Communities, local governments and institutions are important counterparts. THF runs a large vocational training program to build up local capacity, create economic opportunities and to keep traditional building skills and crafts alive. In historic settlements and cities we carry out social surveys and develop rehabilitation proposals. We also research and document traditional Tibetan building technology.

The Tibetan Cultural Realm

Since over a thousand years, Tibetan culture has spread over the entire Himalayan regions, and had a profound effect on Chinese emperors and Mongolian conquerors. In the past, artisans, spiritual masters, pilgrims and traders would travel widely across the Himalayan plateau and adjacent regions. Borders had little meaning for them. The events of the 20th century has led to new borders being drawn, and ancient borders, that for centuries have marked little more than local taxation base, have become impregnable walls separating communities. This is depriving Himalayan culture of its traditional dynamics.

As a result of the advent of modernity, many historic monuments, sites and settlements have disappeared, and traditional skills are in decline. Yet these historic monuments and settlements, and the skills that created them, hold an enormous potential to the future welfare of the people on the plateau. It seems a tragic waste to let all this slip away, so that once-unique Himalayan towns and settlements end up looking like towns anywhere else in Asia. However, it is always dangerous to romanticize, and the inhabitants of the Tibetan cultural realm have legitimate aspirations to reach the same level of comfort and economic progress as people elsewhere. THF assists local communities to find an individual balance that suits them, between tradition and modernity, village life and globalization.

THF's projects are therefore aimed at generating employment and other opportunities for people to improve their livelihoods.

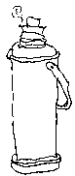
Currently we are trying to work across borders in countries that are part of the Tibetan cultural realm, working with masons from Lhasa, carpenters from Amdo and painters from Ladakh.

The aims and goals portrayed here, and the communities that we work with, need continued support. Thanks to all our supporters and donors.



Map of THF Project Sites

ལས་གནི་གནས་སའི་ས་ཁ།



THF is not responsible for depictions of international borders

1. CHINA PROGRAMME

1.1 Qinghai Programme

1.1.1 Nangra Serkhang

Location: Jentsa County, Huangnan Tibetan Autonomous Prefecture, Qinghai Province.

Duration 2006- on-going

Budget in 2008: € 47,559.06

Serkhang monastery in Jentsa, central Qinghai, was founded in the 14th century by one of the teachers of Tsongkapa, lama Choeje Dondup Rinchen (*Chos rje Don grub rin chen*). In the 18th century it was expanded to its present size of ten historic buildings within a walled compound. Today it is one of the oldest functioning monasteries in the Amdo-Qinghai area. Unlike most other monasteries, Serkhang is collectively owned by the eight local villages of Nangra. The villagers are responsible for maintenance and organization, and caretaker monks live in the compound.

2008 activities

The Serchi Labrang building (*gSer khri bla brang*) was fully restored and reopened as the Serchi Lama's residence.

During the restoration work, approximately 70% of the original timbers could be re-used. Roofing boards were mostly rotten and replaced by willow twigs and gravel stones as the primary roof layers, improving the air ventilation to prevent rotting of ceiling timbers in the future. The parapet was upgraded with timber-supported stone slates, and six drainage holes were made for draining off the rainwater.

Interior restoration followed the local tradition of wooden paneling walls with fixed shelves and wooden floors. Windows were upgraded into double layers for improving insulation, with sliding windows inside. "Khang", the floor heating bed system was re-built for two bedrooms. Under each mudbrick-made bed, a chimney system can transport hot air during the cold winter season. In the shrine room, a shelf was remade according to the original size. Remaining original paintings on the wooden panel wall were covered with soot and dirt, but successful tests had been made how to clean these in the next season.

Top: Serkhang monastery, surrounded by rammed earth walls typical for Yuan Dynasty-influenced monastic foundations.

Below: Work on Serchi Labrang in progress - courtyard, interior carpentry and exterior painting.

ཨ་མདོའི་ལས་གཞི།

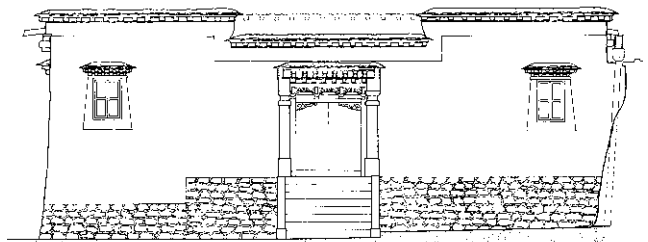
སྤང་ར་གསེར་མང།





The entrance to the courtyard was rebuilt with stone steps, the main gate was rebuilt in wood and the courtyard space was paved with blue square bricks and lime mortal. On the outside of the building, the foundation was strengthened by adding stone masonry to the exterior mudwall, about 80cm high above the ground level, to prevent water infiltration. Interior timbers were applied with linseed oil except the painted boards in the shrine room. The oil is effective for waterproofing and insect protection and gave a beautiful dark shiny color to the original timbers. The outside walls were painted with natural yellow and red pigments according to the original color of the building.

After completing of "Serchi Labrang" building, Serchi Lama, the official resident, visited the site. He is one of the most influential persons in the region. He abandoned his residence here after past damages and deterioration of the site. After the restoration, he was pleased with the result and decided to use it as his seasonal residence. Serchi Labrang re-opened with same original functions and the community is benefiting from having the Serchi lama staying and promoting the site.



Top: Serchi Labrang during and after restoration; elevation drawing (YH/THF).

Yul-lhakhang interior decoration

Yul-lhakhang is the prayer hall for local deities. THF restored the structure in 2007 and interior painting was done this year. The original paintings on the timber frames were barely traceable and faded away. The same motives were copied and repainted, using mineral colors for finer details for endurance. In the coming season, the wooden main altar will be made and colored, and reopened for public use.

Below: painting decoration work in the Yul-lhakhang; below right: after completion.



Nangra Serkhang

Drainage installment and stone slate paving

has begun in the public open spaces in the complex, where the grounds become extremely muddy after rain. We installed a drainage channel in the back, linking the monks' residential quarters and backyard path with 5 drain holes to drain off the dirt water and rain water to outside of the monastic complex. The courtyard of the "Ngakhang" shrine for Niyngmapa Buddhist practice and the public access footpath were paved with slate stone, improving the convenience for visitors and users. Stone paving will be continued in front yard in the coming season.



Drainage & paving, before and after.

Repairs of the other wall

A partial collapsed outer wall was repaired with traditional blue bricks and lime mortar. We found that the walls are originally built from rammed earth (probably dating to the 14th century), and were decked with blue bricks in the 18th century. The wall was made more safe as villages (including children) go for their daily circumambulation walk.

Preparation for the next phase

Sangye Lhakhang is the oldest structure in the complex. The *dougong* brackets supporting the roof structure are very unique. The condition of the structure is quite poor, with the roof suffering from severe deformation and sagging. We have

prepared most of the necessary wooden parts, ready to use for replacing damaged parts when we open the roof next season. The roof structure needs to be rapidly repaired in the short gap between winter and summer rainy season, therefore we prepared everything in advance.

Detailed architectural survey has been completed of the five main buildings of the Serkhang complex. Now there are over 40 measured hand drawings used for planning and documenting the restoration of the individual building. The detailed drawings will be used for the forthcoming final report.

In implementing the project, 20 Tibetans participated in the restoration work, and they could improve their skills. 2008 was an especially difficult year for Tibetan communities, so the project brought an opportunity to have source of income at their home region.

This project was supported by the Royal Netherlands Embassy in Beijing.



7



Left: Amdo carpenter preparing replacement dougong brackets. Far left: repair of the outer walls.

1.1.2 Trika World Peace Stupa

Location: Trika County, Hainan Tibetan Autonomous Prefecture, Qinghai Province.
Duration 2007-2008
Budget in 2008: € 18,409.26

Ragen village is part of the ancient Tibetan settlement of Trika County, with monuments from the Tibetan empire period. THF assisted the Ragen Trika community to rebuild a Stupa monument in replacement of originally three Stupa-s destroyed during the 1960s. Stupa-s are structures that represent Buddha's enlightened mind, and each part of the Stupa shows the path to Enlightenment. Stupa-s promote harmony, prosperity, longevity, good health, peace, and freedom from ignorance. They subdue fear, corruption, and pollution, and bring blessings to the environment in which they are built, to those who build them, and to those who visit and venerate them. The Trika Stupa was designed by Yutaka Hirako and the Ragen community, and it was decided to build in traditional Tibetan stone masonry, 15.5m high.

The construction site in Ragen village was chosen by the community, who negotiated the necessary approval from the local government. The community organized the land purification ceremony, according to the tradition this is necessary to obtain approval from the local deity of the soil.

Upper left: Juniper incense covered with roasted barley flour (tsampa) is offered to the local land deity. The shovel used for digging is decorated with a white ceremonial scarf (khata) symbolizing pureness.

Center left: We designed a solid foundation to support the massive weight of the stone construction. Thanks to Mr. Kaoru Hirako for help with the calculation for the foundation. The first layer consisted of 225 square meters of reinforced concrete. On top of that we built a Tibetan-style foundation with granite rubble stone. The foundation took 2 months to complete.

Sogshing (Tib.: 'life pole')

The sogshing is the spine of a Stupa, here a 12 meter long timber pole.

Left: a monk has inscribed the pole with incantations and symbols. The position of the writings fits with the final structural position of the pole.

ཐི་ཀ་འཇམ་གླིང་གི་པདྨ་མཆོད་རྟེན།





Left: The square basement, known as the **lion throne**, took six weeks to complete in traditional masonry. Centre: Stupa assembly line. Helpers carry the last stones up the steep scaffolding as the stone structure nears completion at a height of 10 meters. Below left: help of a crane was needed to erect the sogshing, carefully positioning it in the exact center of the Stupa.



Thirteen rings, in our case huge wooden discs, represent the thirteen steps of Buddhist teaching on the path to enlightenment. Top right: The Tibetan carpenters finalizing the round shape of the first disc. After completion, the wooden discs were covered with brass sheets. Below right: The climax of the Stupa construction: the 13 wooden rings are lifted by crane to over 15 meters high from the grand level and carefully placed around the sogshing pole. The 'moon' element is fixed on top of the last ring. With the 13 rings and the 'sun' and 'moon' elements in place, the Stupa is structurally complete.





Upper left: villagers bring religious texts covered in silk brocades to be placed inside.
Center left: an image of Vajrasattva ('Diamond mind') was installed in the opening and consecrated by a respected local Ngag-pa (Nyingma-pa tantric adept).



Lower left: the Stupa, pure white under the blue sky.
Top right: The ornamental gate to close the opening is lifted up.
Center right: the Stupa was named 'Trika (Guide) World Peace Stupa', to wish peace for all sentient beings.
Lower right: the assembled community praying for the first time in front of the completed structure.



1.1.3 Jyekundo Old Town Project

ཉེ་ཁུ་མདོ་གྲོང་རྒྱུ་སྐད་སྐད་སྐད་



*Location: Jyekundo Town, Yushu Tibetan Autonomous Prefecture, Qinghai Province.
Duration 2006- on-going
Budget in 2008: € 12,747.09*

Jyekundo is an important historic Tibetan town that developed as a major pilgrimage and trading center between the Kham, Amdo and central Tibetan regions, and north-western China. Presently Jyekundo has 30,000 residents and is the capital of Yushu Tibetan Autonomous Prefecture, at the south-eastern end of Qinghai province, bordering Sichuan and Tibet Autonomous Region. Culturally Yushu belongs to the Kham region.

THF started with an old town preservation project. In the center of the old town, we paved part of the circumambulation passage of the Dunkhor Manilhakhang. This is the community's central place in the old town, where residents old and young come for their daily circumambulations. Like most of the old town, the passage was unpaved, so it becomes extremely muddy during the rainy season.

THF also began preparations for the rehabilitation of the Gongngatsang House, one of the most significant historic buildings in Jiekundo. It is threatened by a planned road, which would obliterate most of the old town.

This project was supported by MISEREOR and the Stavros S. Niarchos Foundation.

*Anti-clockwise from top right:
Dunkhor Manilhakhang;
Jiekundo with old town in foreground and
Dunkhor Manilhakhang in center;
community members and artisans working on
the paving;
the first section almost completed.*



2 LHASA RURAL SUPPORT PROGRAM

2. Lhasa Clinic Project

*Location: Lhasa Prefecture, Medrogongkar
Dzong, Tangkye village
Budget in 2008: € 8,000*

THF built a clinic for basic health care in the village of Tangkye, two hours east of Lhasa. Previously, even though a trained monk doctor lived in the village, there was no space to treat villagers. The monastery donated land and THF built the clinic, relying on volunteer local labour.

This project was supported by the German Embassy in Beijing, in addition the Stavros S. Niarchos Foundation.



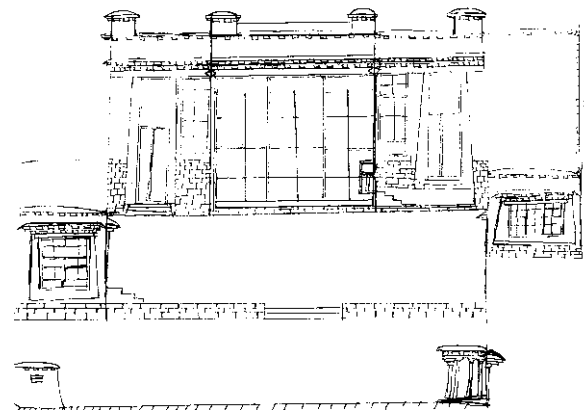
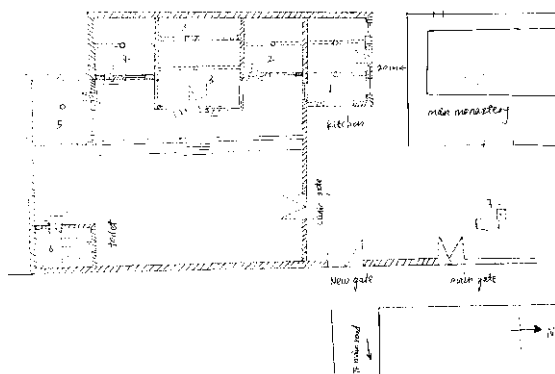
Top: volunteer workers from the village and artisans erect the clinic in traditional Tibetan architecture style.

Center row: plan and elevation for the clinic by THF local staff Mr. Lobsang Ngudup.

Bottom: the nearly-completed clinic building.



12



3 INDIA PROGRAMME

ལ་དྭགས་སྐོར་ལྷོ་རྒྱུ་སྐྱོང་།

3.1 Ladakh Leh Old Town Conservation



Top: **Gonpa Soma Courtyard**

Budget: € 6,398.17 (Finland Embassy).

The historic Gonpa Soma courtyard is used for traditional dances and festivals, but only had a mud floor. THF paved it with natural slate stone.

Right: **Houses of the Poor**

Budget: € 2,598.95 (Finland Embassy).

This year THF/LOTI started two projects for the benefit of people living in the Old Town who cannot effort to bear 50% of the restoration cost of their houses. Many poor families have come to our office to apply for help, and this year it was possible to assist two of them, the homes of Mr. Gyaltsen Hor Tsering and Mrs. Dolma. Mr. Gyaltsen lives alone in his ancestral home (picture on the left). Mrs. Dolma lives together with her young daughter after she divorced from her husband.

Location: Leh, Ladakh, India.

Duration 2003-on-going.

Budget in 2008: € 109,375.78

(includes Central Asian Museum)

The historic town of Leh was for centuries the seat of the kings of Ladakh. In recent years the old city has fallen under decay as some of the old town residents have abandoned their homes because of lacking infrastructure. Due in part to the efforts of THF and its local branch LOTI (Leh Old Town Initiative), there is growing local interest in preserving the historic town. THF/LOTI gave a 5-year-plan to the Leh government. This includes preservation of the historic fabric as a heritage zone and improvements of facilities.

In 2008 THF/LOTI rehabilitated three ancient buildings in the Old Town, and began work on one more. We also completed the restoration of the 15th century mural paintings of the Red Maitreya Temple, cleaned paintings in an old stupa-gate and restored the 17th century Tehsildar Haveli gate. We also started with the restoration of the 14th century Tsatsapuri Temple in Alchi (64km southwest of Leh).

Besides all of these regular program activities THF/LOTI also began to plan and build a major new construction. The Central Asian Museum financed by the Tourism ministry and built in partnership with Anjuman Main-ul-Islam was started end of September, and the projected 4-storey building will be completed in 2010.



For the period of 2008/09 the Old Town of Leh is part of the World Monuments Watch List of 100 Most Endangered Sites published by World Monuments Fund.

THF Team (picture below):

André Alexander, project manager;
John Niewoehner, water and sanitation;
Andreas Catanese, Anna Wozniak, Steffen Klein, technical experts;
Christine & Patrick Jürgens, restorers.

Volunteers

Restoration students of University of Applied Sciences in Erfurt, Cologne and Potsdam, participants of ASA-program (InWEnt), architect students of TU Berlin and School of planning and architecture Delhi, geography students of Heidelberg University.

Parts of the program were carried out in cooperation with the Habitat Unit, School of Architecture, Berlin University of Technology.

L.O.T.I. local team

Stanzin Dolker, accountant;

Konchok Rafstan, logistics manager;

Sonam Gyatso, project coordinator.

Local building skill experts like Jamyang Tarchin, Sonam Dorje, Sonam Angdus, Tsering Dorjay Bulu, Tashi Mutup, Tsering Dorjay Sheypa, Tsering Puntsok.

Building skill experts from Kashmir/Doda: Shaffi Mohammed, Bashir Ahmed and Mohammed Ali. Building skill experts from Nepal: Lal Singh, Hari Prasad and Dambar.

This project was supported by the Ministry of Tourism Jammu & Kashmir State (India), the Embassy of Finland in Delhi, the Embassy of Germany in Delhi, Liechtenstein Development Service, Tibet Unterstützung Liechtenstein (TUL), Stavros S. Niarchos Foundation, Anjuman Moin-Ul-Islam Society, Tibet Heritage Fund Beijing/China and local co-financing and private donations.



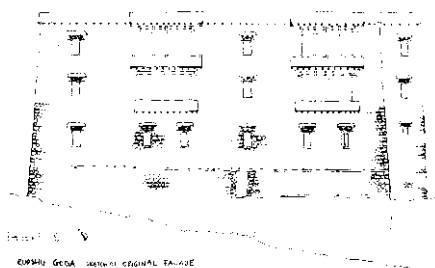
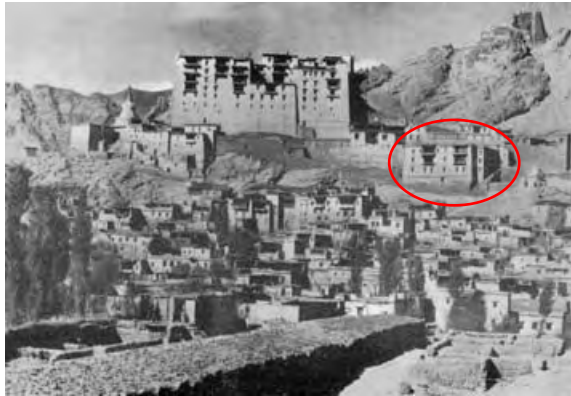
Top: **Gotal House**

Budget: € 6,393.32 (Finland Embassy / Gotal House owner).

The historic Gotal House is one of the last large historic preserved buildings in the old town. While the facade was restored to its original condition, elsewhere in the building modifications were made to bring more light and warmth into the building and to waterproof the roofs. The roof edges were reconstructed and improved, and skylight added for more light. The restoration of the Gotal House lasted from June to September 2008.



3.1 Ladakh Leh Old Town Conservation



From top: Leh with Rupshu house in 1930s; present condition; drawing showing reconstructed elevation; clearing and securing of the site.



Rupsho Goba House

Budget: € 6,668.09 (Liechtenstein LED/TUL).

The Rupsho Goba House is the former residence of a Ladakhi princess of the 18th century. During the second half of the 20th century, it became a dramatic ruin. THF was asked to restore it as a museum for traditional Ladakhi Buddhist art and culture. In cooperation with Berlin University of Technology, designs were developed, and THF started work on securing the remaining structures.



Tehsildar Haveli Gate

Budget: € 707.74 (Finland Embassy).

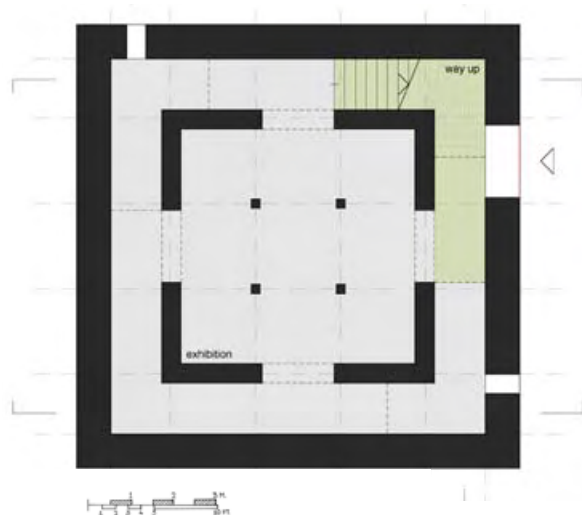
When Leh was a royal capital, it had city walls and entrance gates. Many gates have since disappeared, along with most sections of the old city walls. The local community requested THF/LOTI to restore two gates, the eastern Stupa gate and the Tehsildar Haveli Gate in Nawshar Bazaar. The latter gate was built in the 1840s by the representative of the Maharaja of Jammu in Mughal style. The gate is built out of wood, with rich carvings and some remains of painting. Two German restoration students and the local team carefully cleaned all the surviving elements, replaced missing elements, reinforced the entire structure, constructed a new water-proof roof over it and beautified the surroundings.



3.2 Central Asian Museum



16



Top: presentation sketch (Nadine Weber).
Center: model of the proposed museum, used to discuss the building with the artisan team.
Bottom: ground plan, based on ancient Indian ground plans used for Buddhist and Hindu temples, as well as for Islamic tomb shrines.

Budget: € 36,272.29 (J&K Ministry of Tourism/ Anjuman Society).

The Ministry of Tourism (Jammu & Kashmir State) asked THF to design and build the first proper museum in Leh. The objective of the project is to construct a museum, library and other related infrastructure for the promotion of cultural tourism.

The idea is to inform about the Central Asian trade, of which Ladakh long has been an important crossroads, and which has had a long and lasting influence on the development of Ladakh's unique culture.

Designed by André Alexander with help from the entire team and Berlin University of Technology students, the building is inspired by Leh's Tsemo tower, as well as famous Tibetan towers such as Milarepa's Sekar Gutok.

In August was the traditional foundation stone laying ceremony. The walls of the ground floor were about half completed when work stopped for the winter on Oct 31, 2008.

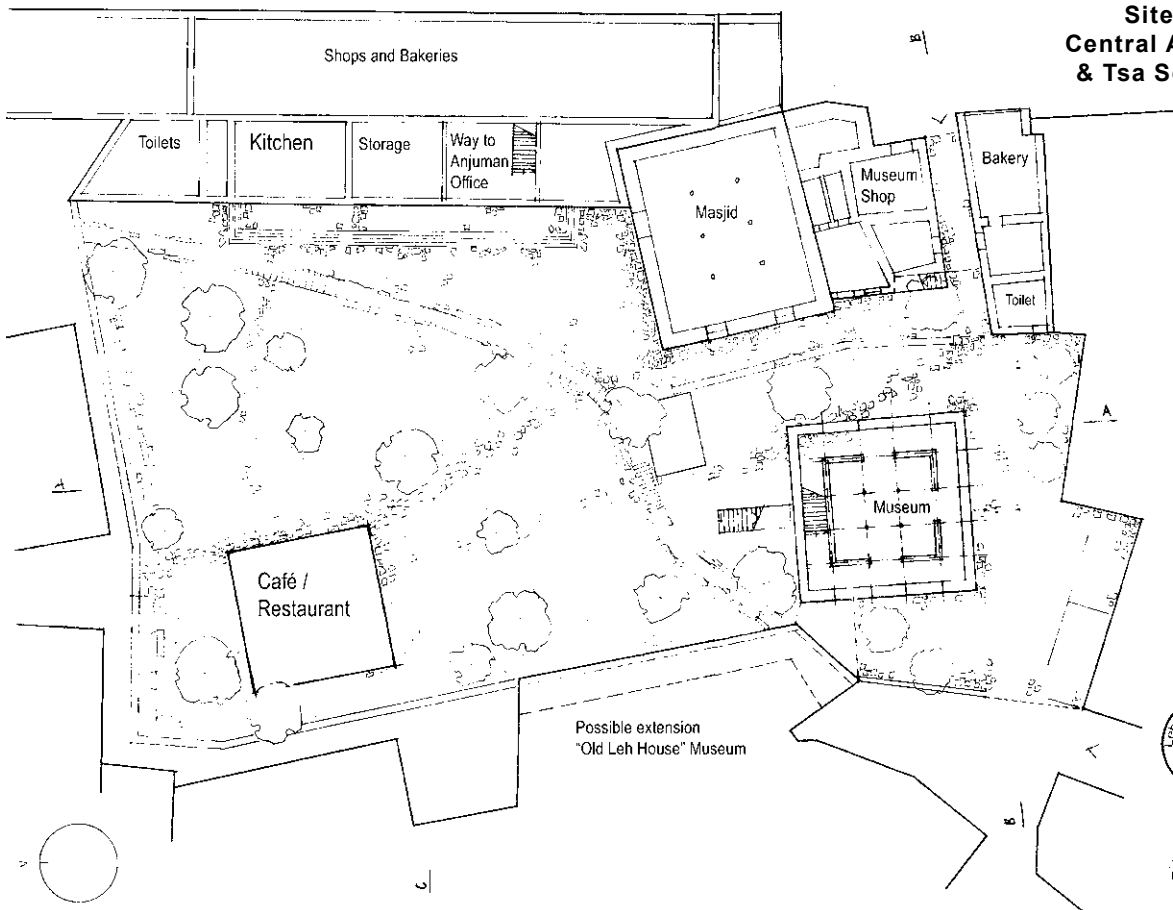


Clockwise from above:
Tibetan wall-painting showing the Pabongka tower near Lhasa, one of the inspirations for the museum design;
foundation stone ceremony with Anjuman Society members;
digging for the foundations;
traditional stone walls rising from the ground.



17

Site Plan Leh Central Asian Museum & Tsa Soma Gardens



LOTH - Leh Old Town Initiative
Tsa Soma - C.A. MUSEUM
Scale: 1:1000
Date: 2008
Author: [Name]

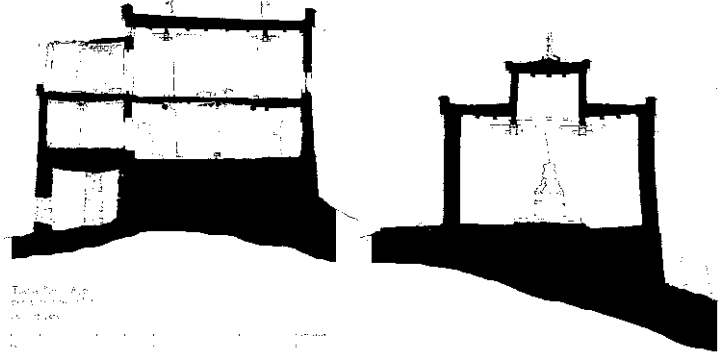
4 WALL-PAINTING CONSERVATION PROGRAM

4.1 Ladakh

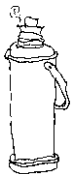
Alchi Tsatsapuri is one of the least known but very important monuments of Ladakh, with mural paintings that have now been dated to the late 13th century. These paintings have deteriorated because of the bad condition of the fabric of the building, especially the roof.

The Tsatsapuri temple consists of three buildings, the Lama's Residence, the Stupa-hall and the Dukhang. In 2008, we focussed on the Lama's Residence (also known as Kalachakra room, as it has a huge Kalachakra Mandala painted on the wall), and the Stupa Hall. German restorers and German, French and Ladakhi students worked on the conservation of the paintings in these two buildings. The local craftsmen team restored the building structure e.g. reconstruction of the entrance portion and exchange of supporting elements.

ལྷེ་བས་རིས་སྤྲུང་སྒྲོབ།



Section drawings, showing the Lama Room (left) and the Stupa Hall (both: Lucia Gratz/THF).



18



Top: south elevation of the Tsatsapuri complex.
Below: paintings in the lantern of the Stupa Hall, after partial cleaning of the central section.



Top: facade of the restored Lama Room with reconstructed stone stairs.
Below: restoration of the parapet of the Stupa Hall.



4 WALL-PAINTING CONSERVATION PROGRAM

4.1 Ladakh Wall-Painting Conservation



Head of the restoration work were the German restorers Christine & Patrick Jürgens (Alchi) and Romanian restorer Anca Nicolaescu (Leh). They worked with students from University Conservation Departments in Erfurt, Cologne, Potsdam and Paris, and Ladakhi trainees Yangchen Dolma, Skarma Lotus and Konchok Samstan.

This project was supported by the Cultural Section of the German Embassy in Delhi.



Top left: senior trainee Yangchen Dolma at work. Top right: the left half of this 13th century depiction of Buddha Sakyamuni in original condition, the right half has been restored.

Meru Monastery

The 16th century Meru monastery (pictured below and center left) requested our help. THF repaired the roof, while Erfurt students carried out emergency conservation of the paintings (bottom left).



19



Leh Red Maitreya temple

Restorer Anca Nicolaescu returned for a third season to Leh to complete work on the 15th century murals in the Red Maitreya temple. Anca made very delicate retouching as requested by the local community. Image: the left half of the face of this blue Avalokiteshvara in original condition, right half after restoration.



4.2 Qinghai

ཐེངས་རིམ་སྤང་སྒྲོབ།

In Qinghai, the wall-painting conservation efforts focussed on the wall-paintings in Serkhang monastery. There we have remnants of an iconographic program from the 14th century (Sangye Lhakhang main hall), as well as 18th century paintings (Sangye Lhakhang circumambulation corridor and the other buildings in the complex).

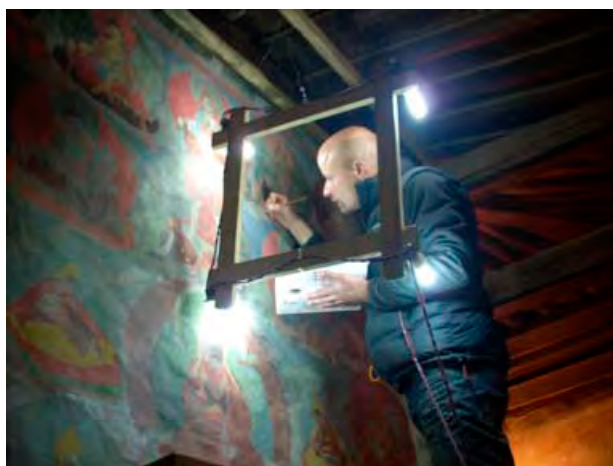
The Serkhang mural restoration program made good progress, the focus was on two buildings: the inner circumambulation path of Sangye Lhakhang with 200 square meters of paintings of murals, and the old painting on the wooden partition of Serchi Labrang. Two qualified German restores took charge of the project, and trained two Tibetan trainees in basic skills of wall-painting conservation.

Most of the work concentrated on the Sangye Lhakhang's circumambulation, photographic documentation and analysis of the pre-condition was completed. Accordingly, cleaning and stabilizing methods were developed and now the cleaning and stabilizing of about 60 % of the total wall area is complete, bringing back clearer images. For the three main walls pilgrims see on entering, paintings were re-touched by filling the missing colors; this method gave clearer individual images from the far view and findable re-touched parts from close view. In the back walls, the historic fragments will be conserved as such.

Two Tibetan trainees learned basic skills on the cleaning, includes the using of special tools and different methods applying on different conditions. The training was always carried out under the supervision of the restores and suitable methods were guided and apply in each different case.

In the Serchi Labrang, a method of wet-cleaning was tested in a part of the wood. To remove only the dirt and soot layers from the painting layer, different mixture of chemical has applied and test for the best result to continue to clean the remain areas.

Team: Chrisitne & Patrick Jürgens with Choekyi and Shardrukto.



Top: German restorer Patrick Jürgens at work in Serkhang.

Center: wooden panel with painting of Milarepa before (left) and after trial cleaning.

Bottom: Tibetan trainee Ms Choekyi.



5. RESEARCH & PUBLICATIONS

དབྱུང་ཞིབ།

5.1 Mongolia Research

In 2008 THF's Pimpim de Azevedo, was invited to research historic sites in the Khanbogd Sum area in South Gobi.

First was Demchig with newly-built cement stupas arranged to form the shape of lotus flower petals. The historic monastery compound was still in ruins. The next sites were Ulaan Sachus (or Ulaan Sakhosnii, the red protector, Beg Tse in Tibetan language) Monastery and Tsagan Tolgoi (white mountain). Demchig, Ulaan Sachus and Tsagan Tolgoi are attributed to Danzan Ravjaa, a famous lama of the Gobi in the 19th century. All three monasteries were destroyed in the 1930's.

Later she also visited Agui cave and Agui Temple, Nomgon sum (to organize a follow-up for the brick manufacturing), and the ruins of Dund Khuree. She also visited the site of Tsogdsol monastery, which once housed 300 monks but now lies in ruins (picture on right).



The visit aimed at evaluating the local conditions at potential sites for development projects. The ruined sites urgently need conservation before further deterioration. This project was supported by MISEREOR.

5.2 Exhibition in Beijing

THF held an exhibition about their work at the popular Pass-By bar in Nanluogu xiang in one of Beijing's last Hutong residential areas. Thanks to owner Mr. Xiao Bian.

5.3 Publications

Ragen Manikhang history: collecting the history is very important to remember the past. Ragen Manikhang, as a small village, has not much recorded history on paper. So they collected the oral traditions, and published a history book about the village and important local persons (picture below). Half of publish cost was sponsored by THF and the other by the villagers. This project was supported by MISEREOR.



བུ་རྒྱལ་ལ་ཕུ་རྒྱལ་ལ་ཕུ་རྒྱལ་ལ་ཕུ་རྒྱལ་ལ་
ཕུ་རྒྱལ་ལ་ཕུ་རྒྱལ་ལ་ཕུ་རྒྱལ་ལ་ཕུ་རྒྱལ་ལ་
ཕུ་རྒྱལ་ལ་ཕུ་རྒྱལ་ལ་ཕུ་རྒྱལ་ལ་ཕུ་རྒྱལ་ལ་
ཕུ་རྒྱལ་ལ་ཕུ་རྒྱལ་ལ་ཕུ་རྒྱལ་ལ་ཕུ་རྒྱལ་ལ་

5.4 Course on Tibetan architecture at Berlin University of Technology

The class of architecture students taught in the winter semester 2007/8 by THF's Andre Alexander came to Ladakh in April this year, accompanied by Prof. Berten. They studied and surveyed several sites and contributed designs for two prospective museum projects.

5.5 Academic Presentations

In March 2008, Pimpim de Azevedo was invited by the School of Architecture of the Chinese University of Hong Kong to give a special class on Building Typologies of Mongolian Architecture.



7. WHO ARE THF

THF་མཚམས་སྒྲུབ་མཛེས་བསྐྱེད་པའི་བཅུ་གཉིས་ཀྱི་མཛུགས་ཁག་

TIBET HERITAGE FUND (THF) is an international non-profit organization founded 1996 in Lhasa and Berlin. THF's aims are to support preservation of cultural heritage and environment; improvement of living conditions for disadvantaged communities, particularly in the sectors employment, education and health; and sustainable and community-based development of communities in fragile and endangered environments.

THF is a registered non-profit organization in Germany, India and Mongolia, and recognized as non-profit cooperation partner in China.

THF is directed by André Alexander (also the Ladakh program manager) and Pimpim de Azevedo, and Yutaka Hirako is the Chief Financial Officer and China Program Manager; Sylvester Kaben is the treasurer, Lundup Dorje the Beijing office manager, Lobsang Ngudup the Qinghai local program manager; and Tseyang is heads the accounting and logistics department. In Ladakh, the team is supported by architect Andreas Catanese, accountant Stanzin Dolker and staff Konchok Rafstan and Sonam Gyatso.



22

Contact THF

info@tibetheritagefund.org

In Ladakh, visit us between April and October at Lakruk House, Stalam, Leh, below the old royal palace. In Beijing we stay close to Nanlouguxian, and during working season we are in Amdo.

THF aims and principles

- Assisting poor and disadvantaged communities in both urban and rural settings in their needs for economic development, cultural preservation, health and education
- Conservation with and for local communities (ICOMOS living cities principles).
- Conservation of buildings and of building technology.
- For residential buildings: priority on livability, owner/occupants participate in planning process, protection of tenants.
- For monuments (incl. monasteries): authenticity desired, building history respected, owners participate in planning process.
- Maximum retaining of historic elements (UNESCO Venice charter).
- Accommodation of local demand for pragmatic usability of sites.
- Compromise and Negotiation are routine.

THF is non-political and committed to promote understanding and co-operation between different cultures and nations to benefit world cultural heritage.

THF projects are based on a participatory approach, centered around preservation of indigenous heritage and traditions. Our water and sanitation program is aimed at improving people's living conditions.

THF trains local people in technical skills, such as traditional building skills, architectural design and survey work, mural conservation and general restoration skills.



8. FINANCIAL REPORT

ཐོག་མཐུན་ལྷན་ཁག་

THF Incoming Funds 2008: EURO 248,563.76

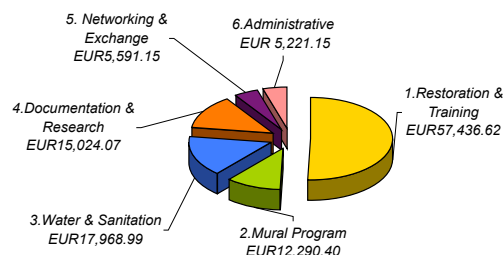
Carry-over from 2007	€ 1,299.81
Dutch Embassy Beijing	€ 62,730.25
MISEREOR	€ 59,000.00
J&K Ministry of Tourism	€ 30,918.52
Finland Embassy Delhi	€ 26,224.00
German Embassy Delhi	€ 18,509.00
Liechtenstein Development Service	€ 15,715.48
Stavros S. Niarchos Fnd.	€ 9,507.51
German Embassy Delhi	€ 8,000.00
Virginia & Wellington Yee	€ 6,317.05
European Commission	€ 2,950.00
Local co-financing	€ 2,009.70
ACHR Bangkok	€ 1,266.72
Gesellschaft f. bedrohte Völker	€ 857.16
UNESCO Delhi	€ 624.66
Private donations	€ 996.45
Membership fees & book sales	€ 1,427.56
Bank interest	€ 209.89
Total	€ 248,563.76

THF Outgoing Funds 2008: EURO 222,908.16

Ladakh Project	€ 109,375.78
Serkhang Monastery	€ 47,559.06
Ragen Stupa & School	€ 18,409.26
Surveys & Documentation	€ 13,714.53
Jiekundo Old Town	€ 12,747.02
Lhasa Clinic	€ 8,980.67
Conference & networking	€ 5,591.15
Administrative in China	€ 5,022.05
Amdo Labrang project	€ 1,309.54
Bank fees	€ 199.10
Total	€ 222,908.16
carry-over 2007	€ 25,655.6

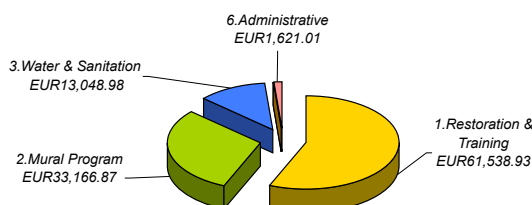
Expenses by country and by project type:

China Project



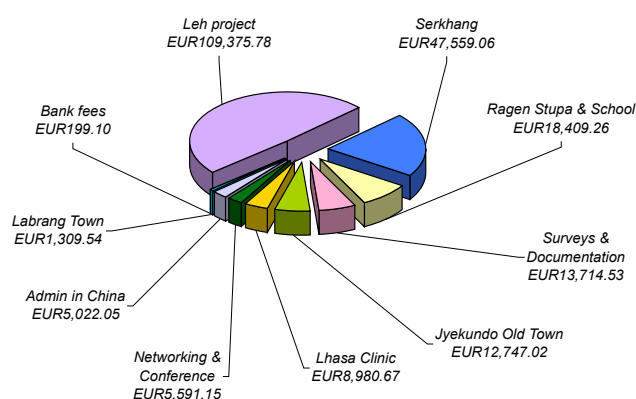
total € 113,532.38

Ladakh Project



total € 109,375.78

Expenses by Projects



total € 222,908.16

A very big thanks from all participants and local partners and beneficiaries to everyone who has supported our work. Contact THF to find out how to support our current projects.



CONTACT INFORMATION

THF GERMANY: BERLINER STR.68, 13189 BERLIN

TAX-FREE BANK A/C: TIBET HERITAGE FUND 71041920 03, BLZ 10090000

IBAN: DE03 1009 0000 7104 1920 03, BERLINER VOLKSBANK, BERLIN

THF CHINA: 4-405, No.8, JIAODONGXIAO QU, 100007 BEIJING

HONG KONG: G/F, 4 TSENG TAU SAN TSUEN, MUI WO, LANTAU ISLAND HK

TAX-FREE BANK A/C: TIBET HERITAGE FUND 813-310919-838 CODE 004

SWIFT HSBCHKHHHKH, HSBC HONG KONG, 1 QUEEN'S ROAD CENTRAL HK

THF LADAKH: LAKRUK HOUSE, STALAM, LEH 194101 LADAKH J&K

WWW.TIBETHERITAGEFUND.ORG